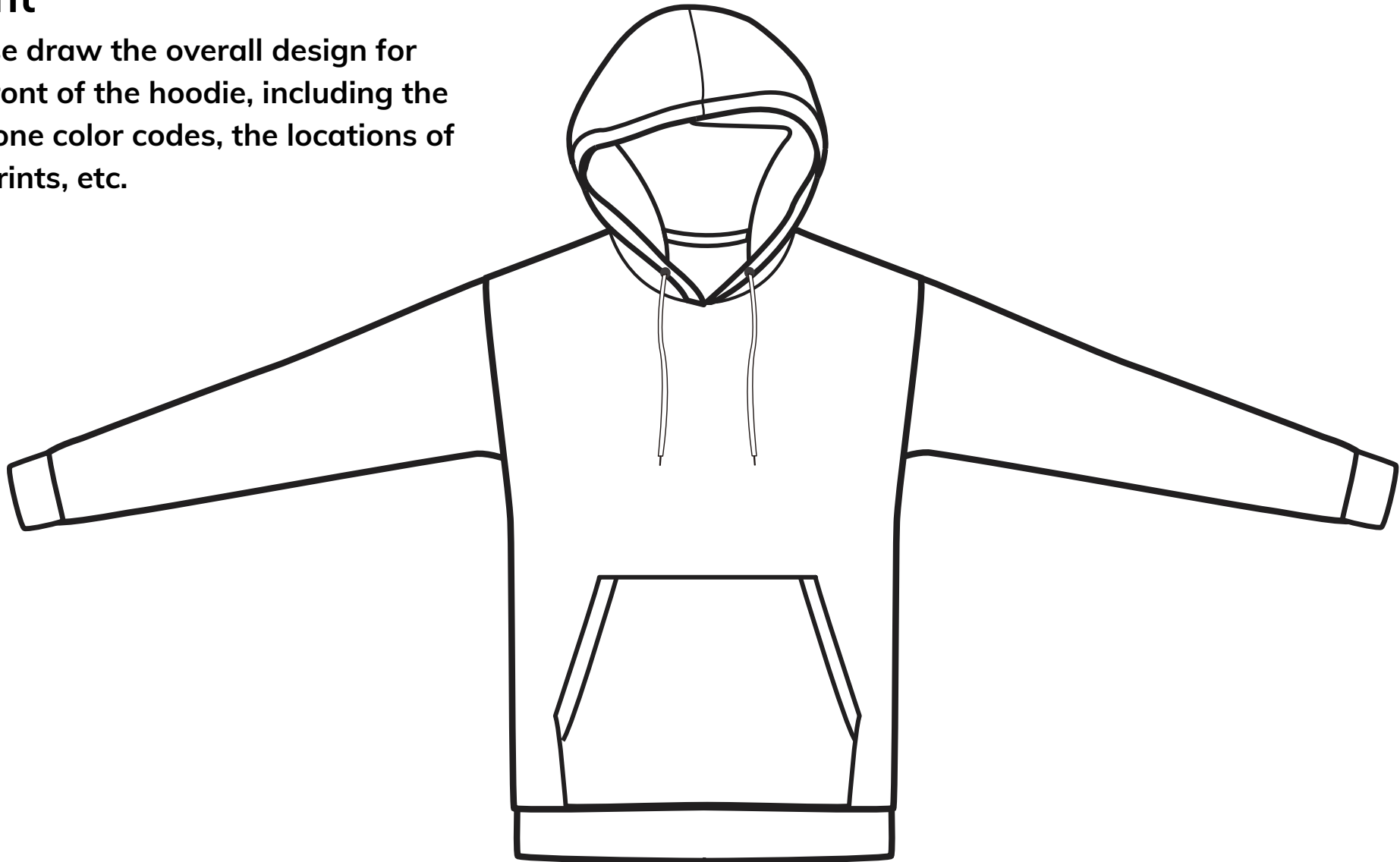


# HKUST Hoodie Competition - Hoodie Template

## Front

Please draw the overall design for the front of the hoodie, including the Pantone color codes, the locations of the prints, etc.



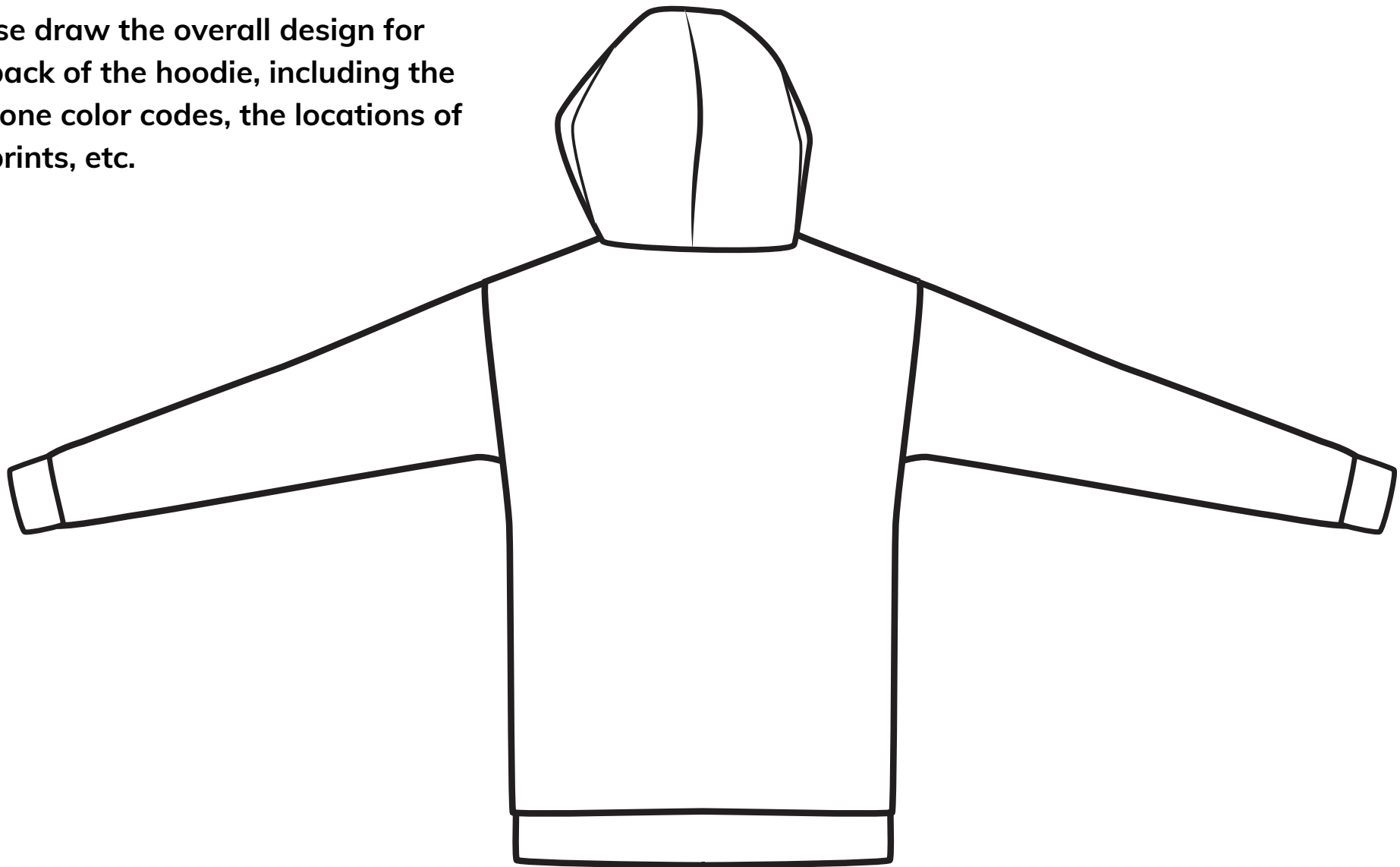
You may add up to 4 prints or embroideries.

View the “Design Guideline” on the competition website for details.

# HKUST Hoodie Competition - Hoodie Template

## Back

Please draw the overall design for the back of the hoodie, including the Pantone color codes, the locations of the prints, etc.



# HKUST Hoodie Competition - Hoodie Template

## Print 1 (if any)

Please draw the design of the print and indicate all details such as the shape, size, Pantone color codes, etc.

# HKUST Hoodie Competition - Hoodie Template

## Print 2 (if any)

Please draw the design of the print and indicate all details such as the shape, size, Pantone color codes, etc.

# HKUST Hoodie Competition - Hoodie Template

## Print 3 (if any)

Please draw the design of the print and indicate all details such as the shape, size, Pantone color codes, etc.

# **HKUST Hoodie Competition - Hoodie Template**

## **Print 4 (if any)**

Please draw the design of the print and indicate all details such as the shape, size, Pantone color codes, etc.

# **HKUST Hoodie Competition - Hoodie Template**

## **Embroidery 1 (if any)**

Please draw the design of the embroidery and indicate all details such as the shape, size, Pantone color codes, etc.

# **HKUST Hoodie Competition - Hoodie Template**

## **Embroidery 2 (if any)**

Please draw the design of the embroidery and indicate all details such as the shape, size, Pantone color codes, etc.



# **HKUST Hoodie Competition - Hoodie Template**

## **Embroidery 3 (if any)**

Please draw the design of the embroidery and indicate all details such as the shape, size, Pantone color codes, etc.

# **HKUST Hoodie Competition - Hoodie Template**

## **Embroidery 4 (if any)**

Please draw the design of the embroidery and indicate all details such as the shape, size, Pantone color codes, etc.

# **HKUST Hoodie Competition - Accessories Template**

Please select one accessory item to design. You can find the template for each item on the following pages.

(Tick to select one accessory item)

**Cap** (Page 2-5)

**T-Shirt** (Page 6-9)

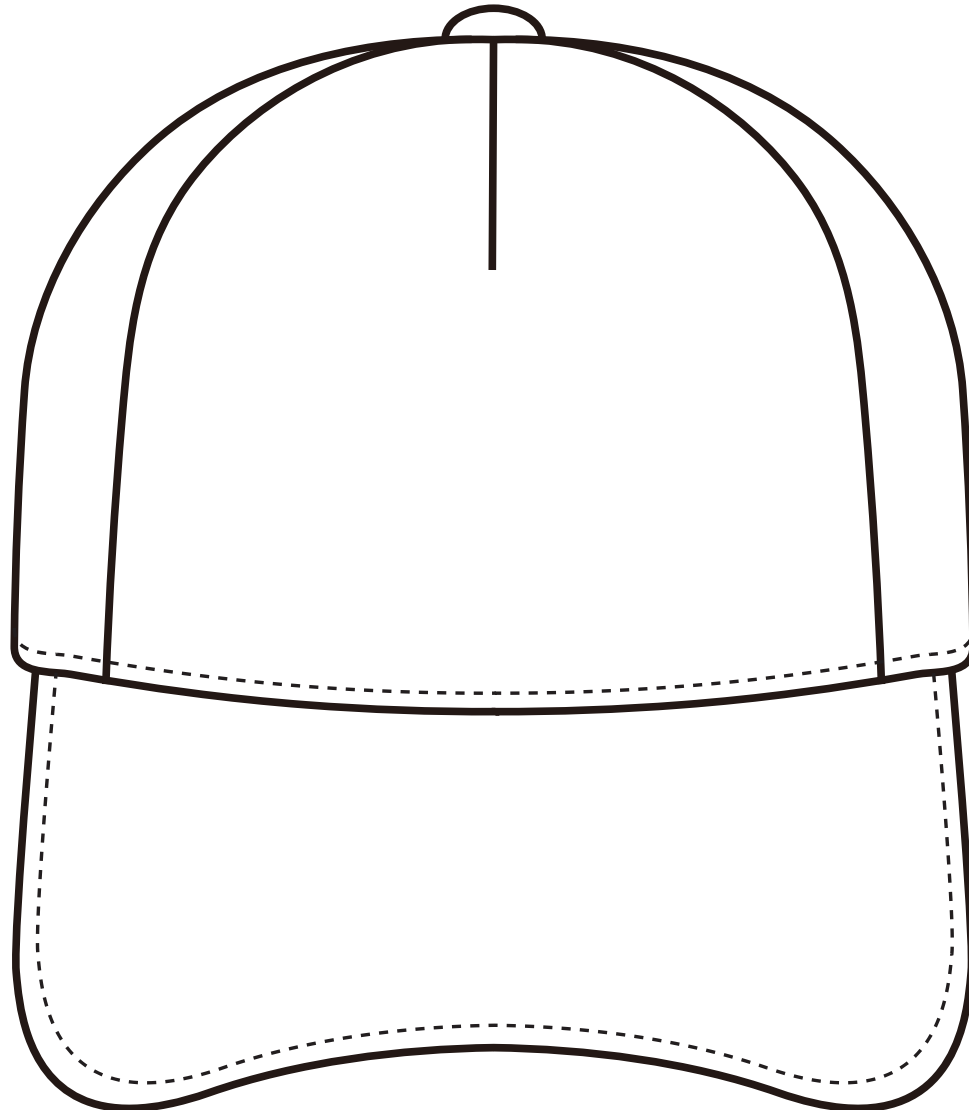
**Tote Bag** (Page 10-13)

# HKUST Hoodie Competition - Cap Template

## Front

Please draw the overall design for the front of the cap, including the Pantone color codes, the locations of the prints, etc.

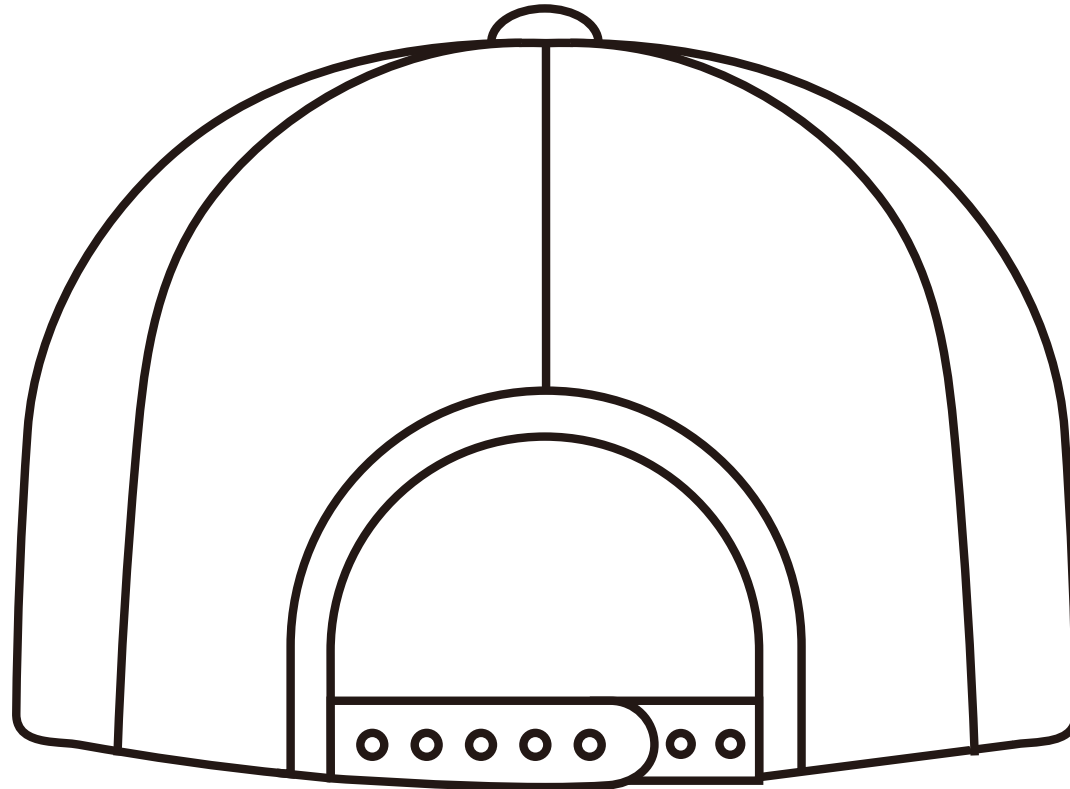
You may add up to 2 small embroideries (be aware of the limited space of a cap)



# HKUST Hoodie Competition - Cap Template

## Back

Please draw the overall design for the front of the cap, including the Pantone color codes, the locations of the prints, etc.



# HKUST Hoodie Competition - Cap Template

## Embroidery 1

Please draw the design of the embroidery and indicate all details such as the shape, size, Pantone color codes, etc.



# **HKUST Hoodie Competition - Cap Template**

## **Embroidery 2 (if any)**

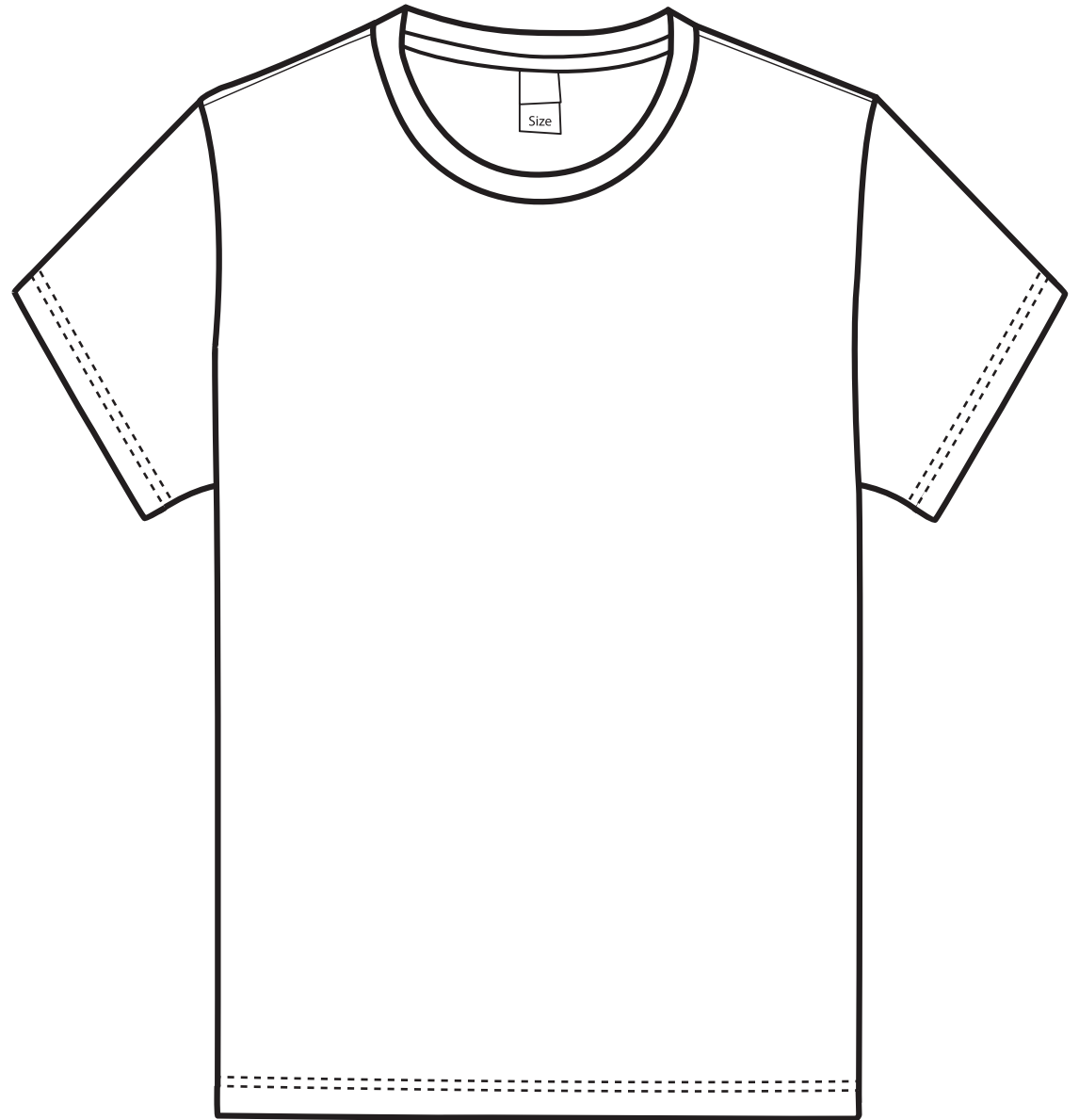
Please draw the design of the embroidery and indicate all details such as the shape, size, Pantone color codes, etc.

# HKUST Hoodie Competition - T-shirt Template

## Front

Please draw the overall design for the front of the t-shirt, including the Pantone color codes, the locations of the prints, etc.

You may add up to 2 prints to the front or back, no larger than A3 size.

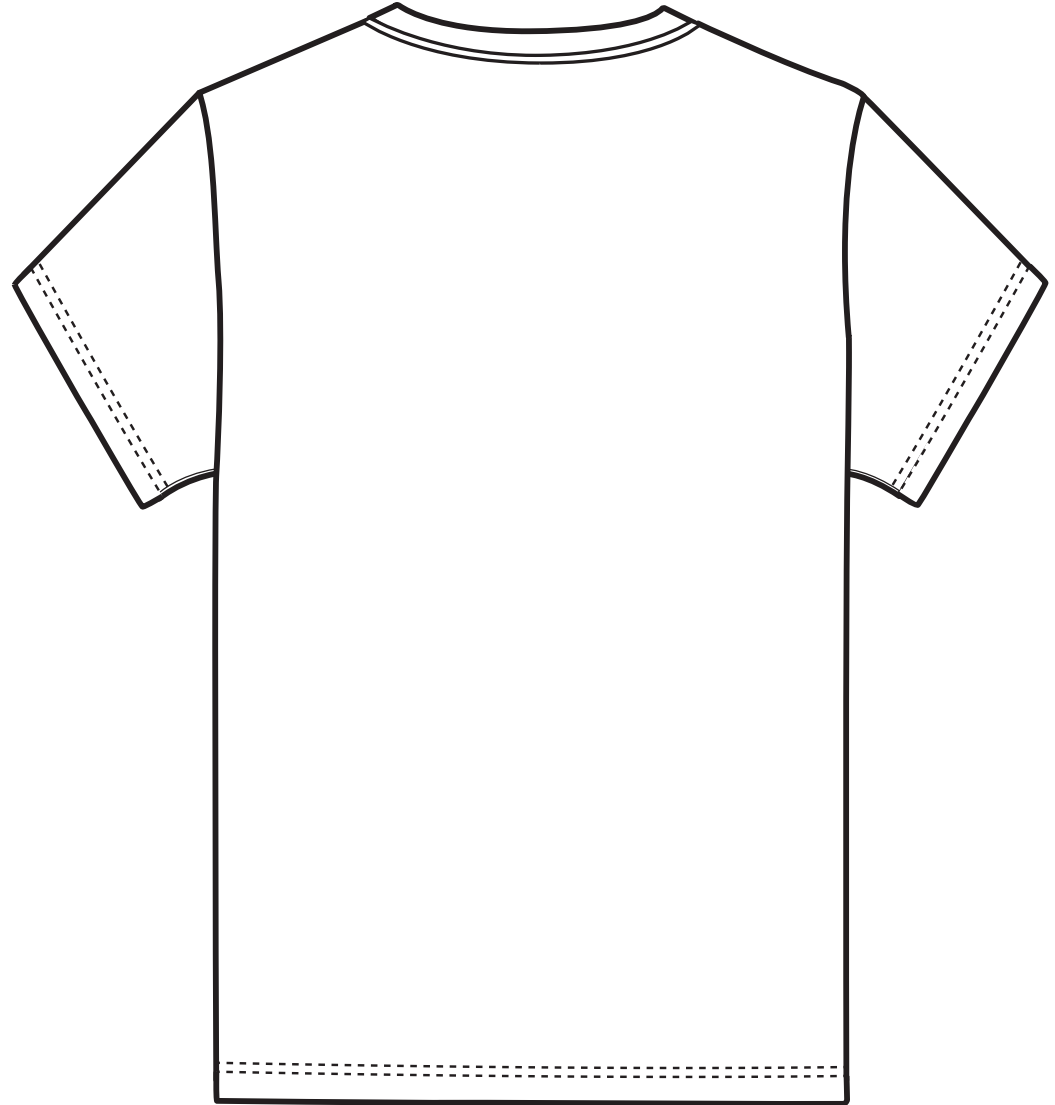




# HKUST Hoodie Competition - T-shirt Template

## Back

Please draw the overall design for the front of the t-shirt, including the Pantone color codes, the locations of the prints, etc.



# HKUST Hoodie Competition - T-shirt Template

## Print 1

Please draw the design of the print and indicate all details such as the shape, size, Pantone color codes, etc.

# **HKUST Hoodie Competition - T-shirt Template**

## **Print 2 (if any)**

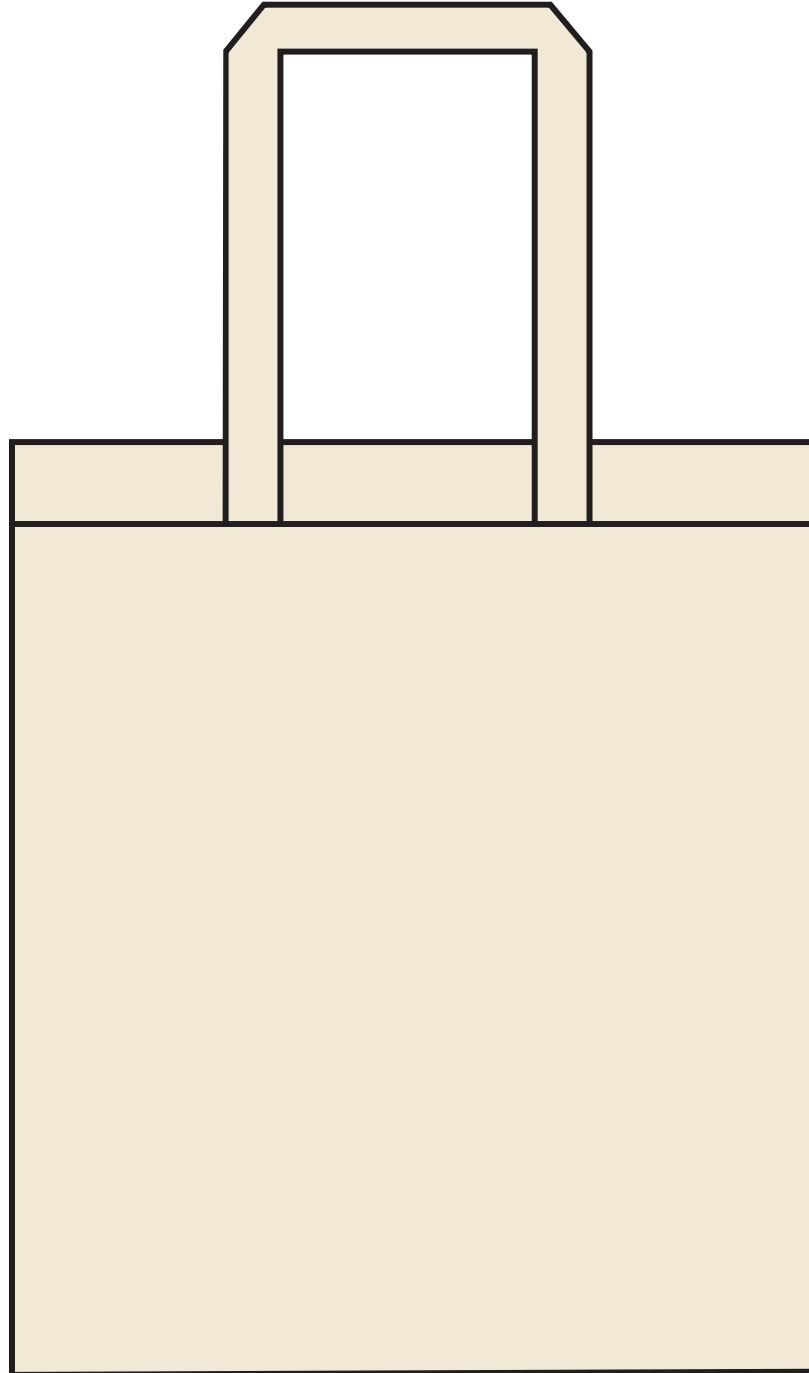
Please draw the design of the print and indicate all details such as the shape, size, Pantone color codes, etc.

# HKUST Hoodie Competition - Tote Bag Template

## Front

Please draw the overall design for the front of the tote bag, including the Pantone color codes, the locations of the prints, etc.

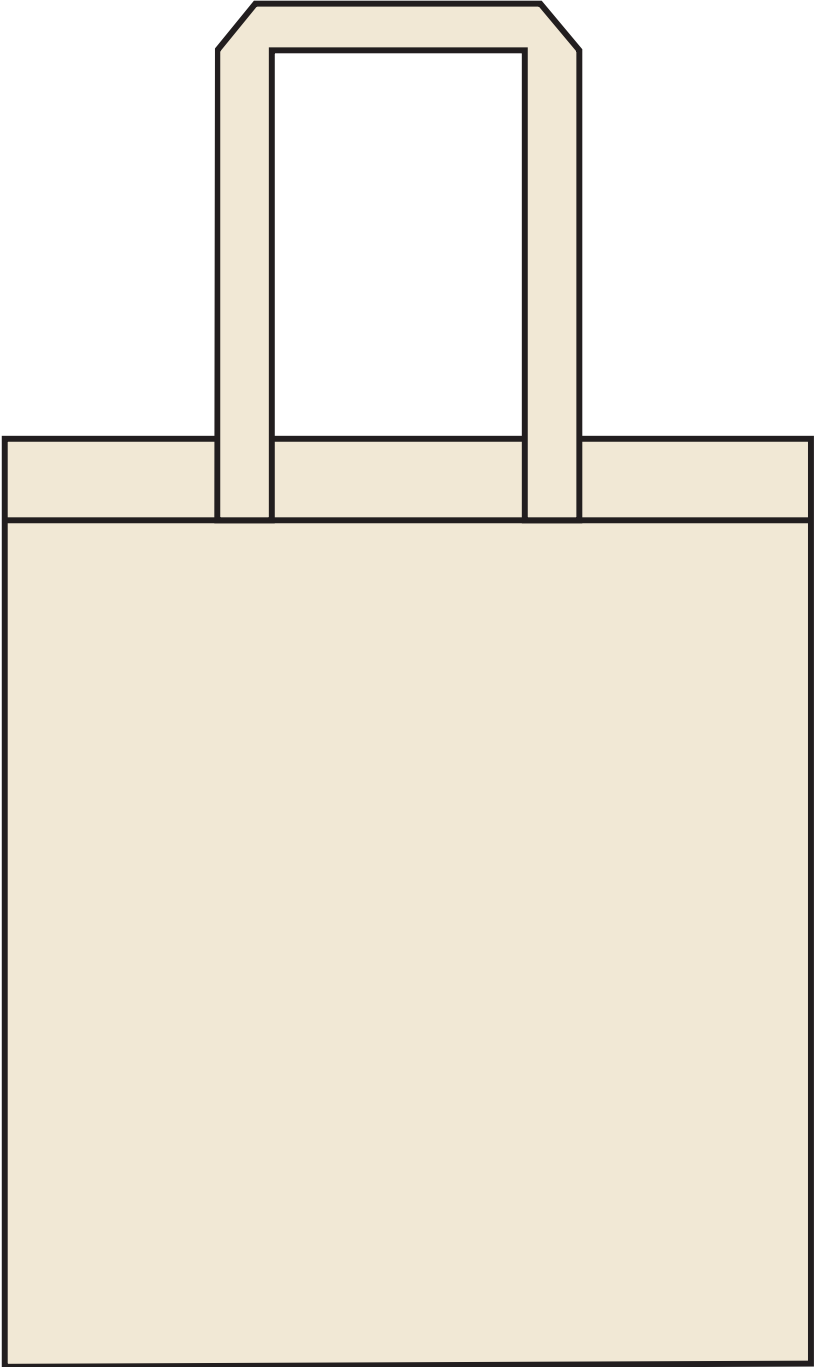
The size of tote bag: 33cm (W) x 38cm (H)  
You may add up to 2 prints to the front or back, no larger than A4 size.



# HKUST Hoodie Competition - Tote Bag Template

## Back

Please draw the overall design for the back of the tote bag, including the Pantone color codes, the locations of the prints, etc.



# HKUST Hoodie Competition - Tote Bag Template

## Print 1

Please draw the design of the print and indicate all details such as the shape, size, Pantone color codes, etc.

# **HKUST Hoodie Competition - Tote Bag Template**

## **Print 2 (if any)**

Please draw the design of the print and indicate all details such as the shape, size, Pantone color codes, etc.

# HKUST Hoodie Design Competition - Design Guideline on Print & Embroidery

You may include a max. of **4 prints or embroideries** (any combination as you wish, e.g., 2 prints & 2 embroideries, etc.).

## Print

Technique:

### **PU Heat Transfer (PU熱轉印刷)**

This process involves printing a colored design onto a sheet of vinyl and the printer cuts around the design. It is then heat-pressed onto the garment. PU Heat Transfer can print with special colors such as fluorescent, gold and silver.

Size:

Each design of print cannot be larger than **A3 size (= 297 x 420mm)**.

Technical Remarks:

- Suitable for colorful patterns
- Not suitable for scattered printing and non-integrated patterns.
- Pattern lines should be at least 0.6mm or more (including the spaces between lines).
- A bleeding stroke will be added if the lines are less than 0.6mm.



Reference Photos (Print):



Remarks: the design shown in each photo image counts as 1 print.

## Embroidery

Technique:

### **Embroidery (刺繡)**

Embroidery is the process by which a design is sewn onto a garment using a computerised embroidery machine. We use industrial embroidery machines to achieve a high quality and long lasting finish.

Size:

Each design of embroidery cannot be larger than **20cm x 28cm**.

Technical Remarks:

- Suitable for printing mono patterns or patterns only with a few colors.
- Gradient patterns or patterns that are too faint in color are not suitable.
- Pattern lines should be at least 1mm or more (including spaces between lines).

Remarks:

If the embroidery designs turns out to be too complex, we may suggest to use PU Heat Transfer for better graphical display instead.

Please remember that the focus is to showcase your creativity. If your design is selected for the final round, our team will assist you with the technical details.

Reference Photos (Embroidery):



Remarks: the design shown in each photo image counts as 1 embroidery.